

DATA SHEET

---



**nx510**

---

next125

nx510

Materials

**nx510**  
**Matt velvet lacquer**  
**front**  
 L277M Agate grey  
 matt velvet AFP



Planning details

Pocket system, trolley,  
 recess profile  
 with lighting

**IMAGE DESCRIPTION**

Open when it is needed. Shut if you can't be bothered to tidy up right away. The kitchenette with fronts in elegant agate gray combines compact functionality and a homely effect with unrestricted cooking enjoyment – even in small rooms or offices. Kitchen appliances and storage space can be perfectly concealed behind the retractable doors. At the same time, the recess is put to good use as the illuminated recess panel can be used to store herbs and spices and the like.

**MATERIALS**

nx510 Matt velvet lacquer front, available in 20 colours.

Matt velvet lacquer from next125: the principle of variety captured in fascinating shades. 20 colours of generous range - between bright accents and muted chic - awaken the appeal of combining and create scope for personal interpretation of the kitchen. In the interest of the environment, the matt velvet lacquers from next125 are produced using the water-based dual-cure process.

**PRICES**

On demand

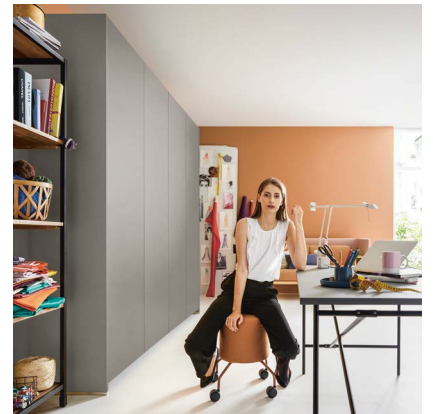
## SOCIAL MEDIA BUILDING BLOCKS

### CAPTION IDEA

Looks great even when closed: The kitchenette. With fronts in agate grey it combines compact functionality, a homely feel and unlimited cooking pleasure – also in small rooms or offices. Behind the retractable doors, there is enough space to hide kitchen appliances and other things and, thanks to the illuminated recess profile for herbs and other things, also the recess does not remain unused.

### RECOMMENDED HASHTAGS

#next125 #next125kitchen #authentickitchen #next125küche #kitchendesign #kücheninspiration #kitcheninspiration #kitchen #küche #interiordesign #kitcheninspo #küchenideen #küchenplanung #kitcheninterior #kitchenstyle #interiorinspo



### DECLARATION

Are you using social media to acquire customers? We would be delighted if you could share our content on your own channels. To do so, you can either utilize the sharing function of the respective platforms or access our image and video database on ShareFile to download content yourself. If you have any questions, please do not hesitate to contact us at [socialmedia@schueller.de](mailto:socialmedia@schueller.de) – we are here to assist you.

### GUIDELINES

In order to avoid any mistaken impression that you are the manufacturer of the products by third parties, advertising materials, images, and trademarks must not be used for profile pictures or usernames on social networks. If images are used for self-promotion on social networks, the hashtag #next125 is mandatory. You are also welcome to optionally link to our channels to provide your subscribers with an additional source of information.

IMAGES

---



**next125**

---

Manufacturer: next125